

WIRING SCHEMATICS

FOR INOVELLI ON/OFF SWITCHES

(LZW30, LZW30-SN)



How to Use this Guide

This guide will walk you through how to wire your Inovelli smart On/Off switches (Model #'s: LZW30, LZW30-SN). There are many difference scenarios and the key is to first understand what setup you have and what setup you desire. To figure out what you have and what you desire, go through the steps below. When complete, check out the Table of Contents to see your specific wiring section.

Step 1 - Determine What Setup You Have

Count the number of switches you have that control the same light. This will determine whether or not you have a 3-Way, 4-Way, 5-Way, etc.



Single Pole

One switch controls a load.



3-Way

Two switches control the same load.



4-Way

Three switches control the same load.

Step 2 - Determine Whether to Use an Auxiliary Switch, Dumb Switch or Secondary Smart Switch

There are a few different options when choosing what to wire your smart switch to in a multi-switch setting. The first option is to leave your existing, “dumb” switch. The second option is to replace your existing dumb switch with an auxiliary (add-on) switch. The third option is to replace your existing dumb switch with another smart switch. Below are the some things to think about if you're unsure.

Leaving your, “Dumb” Switch:

This option is the easiest solution as you can leave your switch in the wall without swapping it out. This is also the cheapest option. The only downside here is that the dumb switch will not match your smart switch aesthetically. But that's really the only downside.

Using an Auxiliary (Add-On) Switch:

This option is requires you to remove your existing switch and replace it with an auxiliary switch such as one made by GE or HomeSeer. The benefit to using an add-on switch is that the switches will match better as both paddles rest in the neutral state. The downside to this method is that it's more costly.

Using another Smart Switch:

This option is requires you to remove your existing switch and replace it with another smart switch (preferably an Inovelli). The benefit to using another smart switch is that you can add scene control or notifications from either side (NOTE: Red Series switch required). The downside is that this is expensive and also will require you to associate Z-Wave switches together, which may not be supported by all HUB's.

Step 3 - Find Your Schematic!

After you determined what type of setup you have (ie: Single Pole, 3-Way or 4-Way) and what you'd like to use in your multi-switch setup (if applicable), please find the corresponding page from the list below. If you do not see your schematic, please reach out to a licensed electrician for help. We are not able to give out electrical advice due to insurance and liability purposes.

Schematic Pages (Sorted By Switch Type)

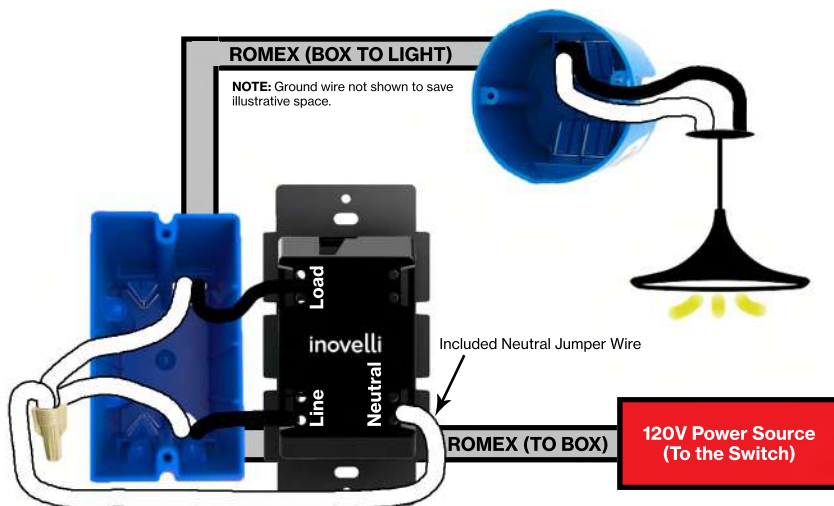
Single Pole Installation	3
Dumb Switch 3-Way Installation	4
Dumb Switch 4-Way Installation	7
Aux/Add-On Switch 3-Way Installation	9
Aux/Add-On Switch 4-Way Installation	12
Smart Switch 3-Way Installation	14

Schematic Pages (Sorted By Installation Type)

Single Pole Installation	3
3-Way Installation Dumb Switch	4
3-Way Installation Aux/Add-On Switch	9
3-Way installation Smart Switch	14
4-Way Installation Dumb Switch	7
4-Way Installation Aux/Add-On Switch	12

Single-Pole Installation

Inovelli Smart Switch

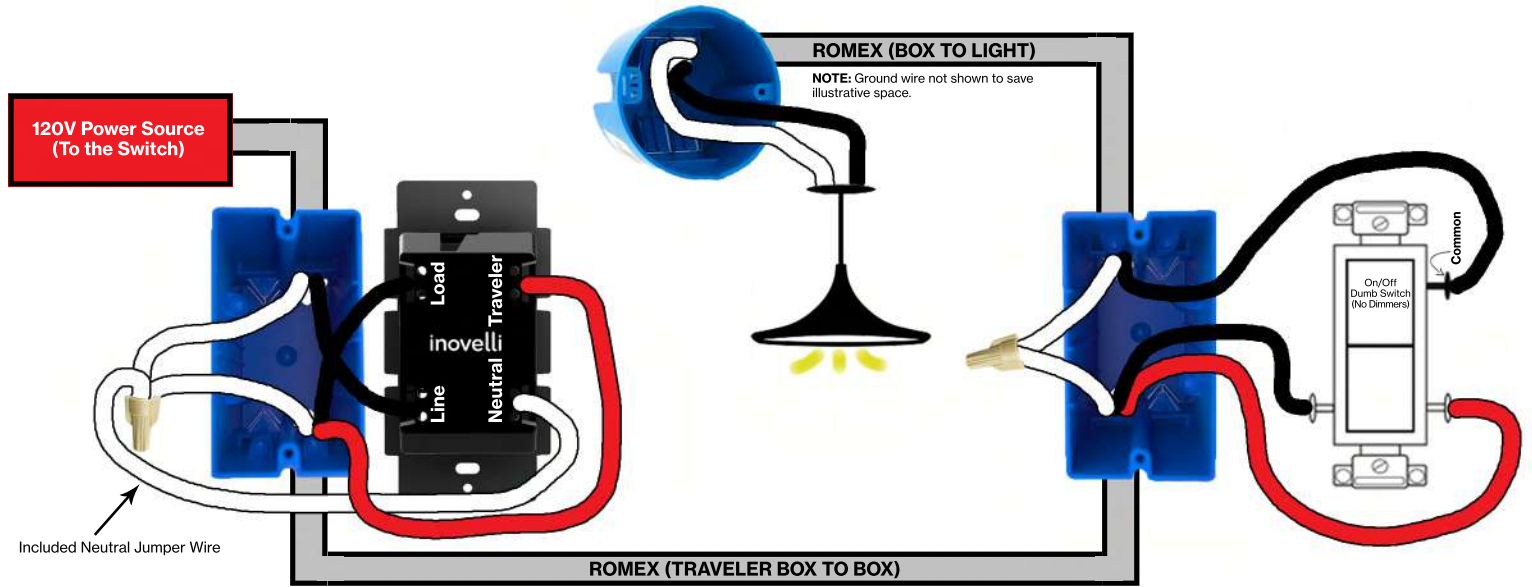


3-WAY INSTALLATION (DUMB SWITCH)



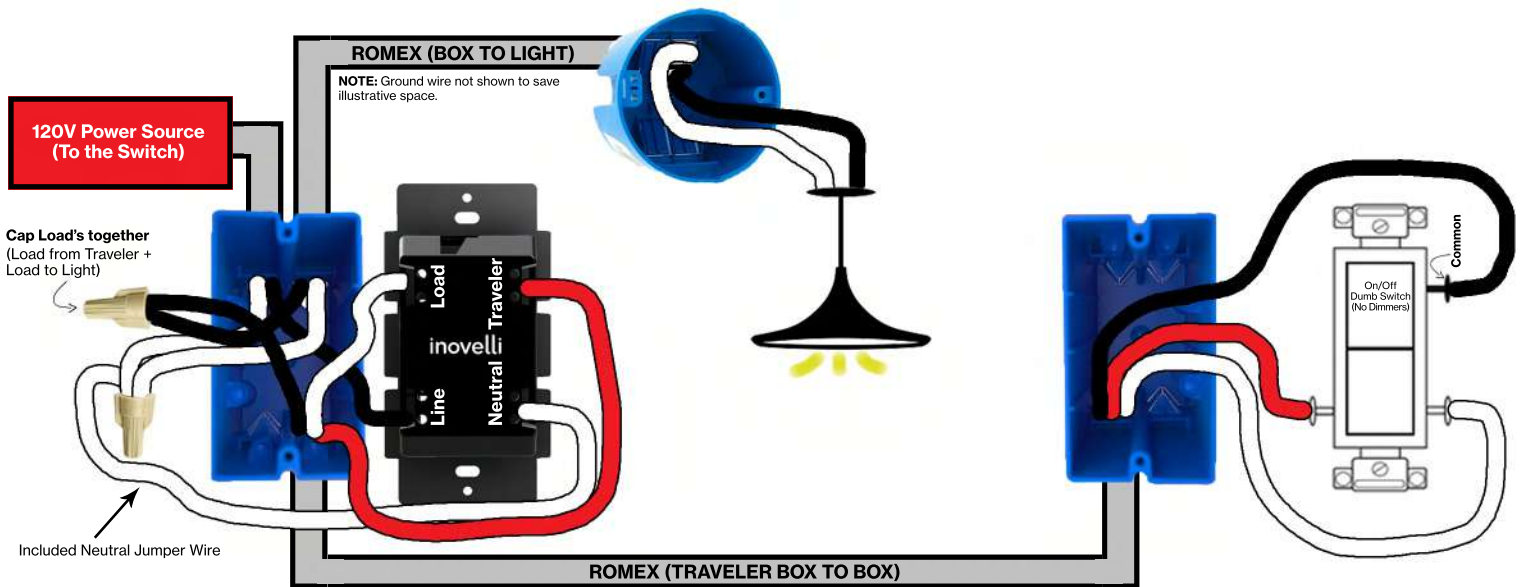
3-Way Installation (Line/Load Separate Boxes)

Inovelli Smart Switch + Existing Dumb Switch



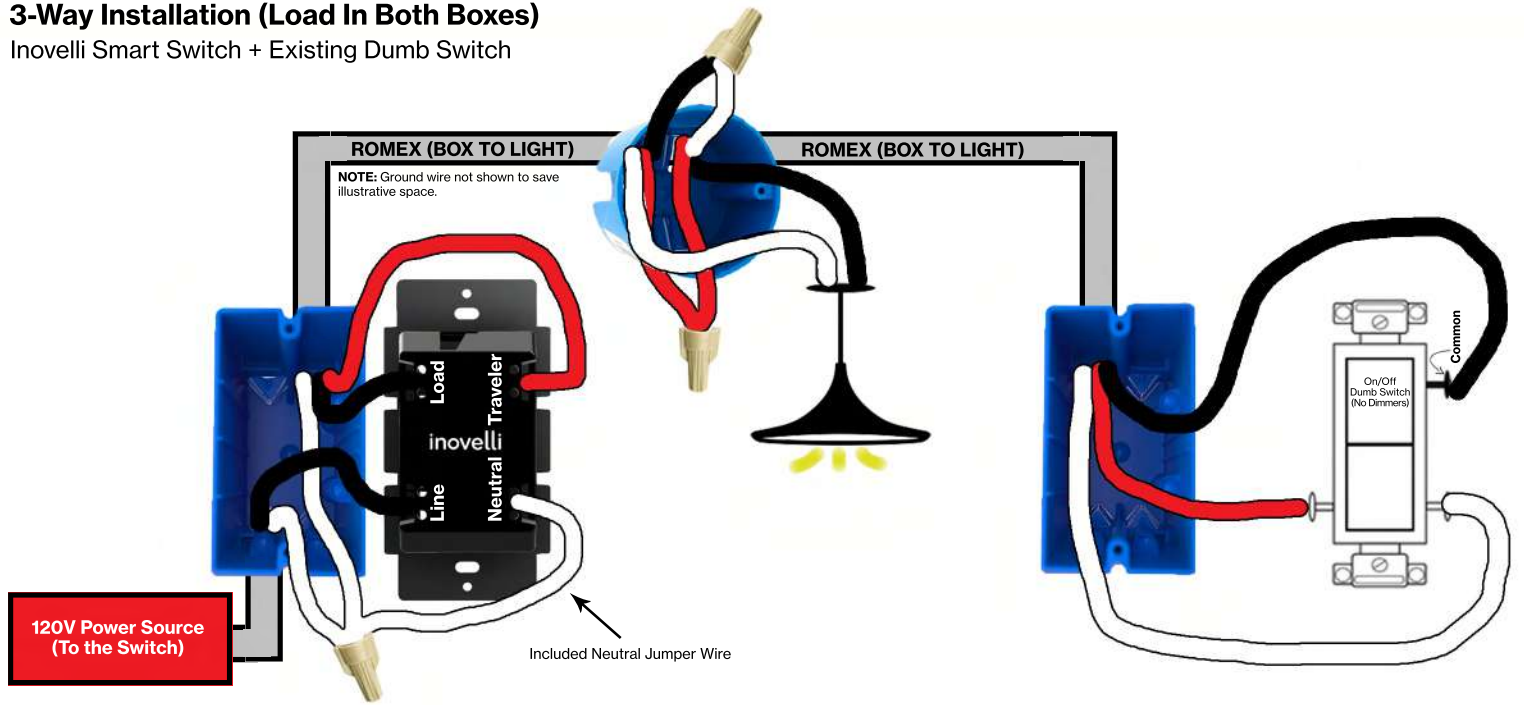
3-Way Installation (Line/Load Same Box)

Inovelli Smart Switch + Existing Dumb Switch



3-Way Installation (Load In Both Boxes)

Inovelli Smart Switch + Existing Dumb Switch



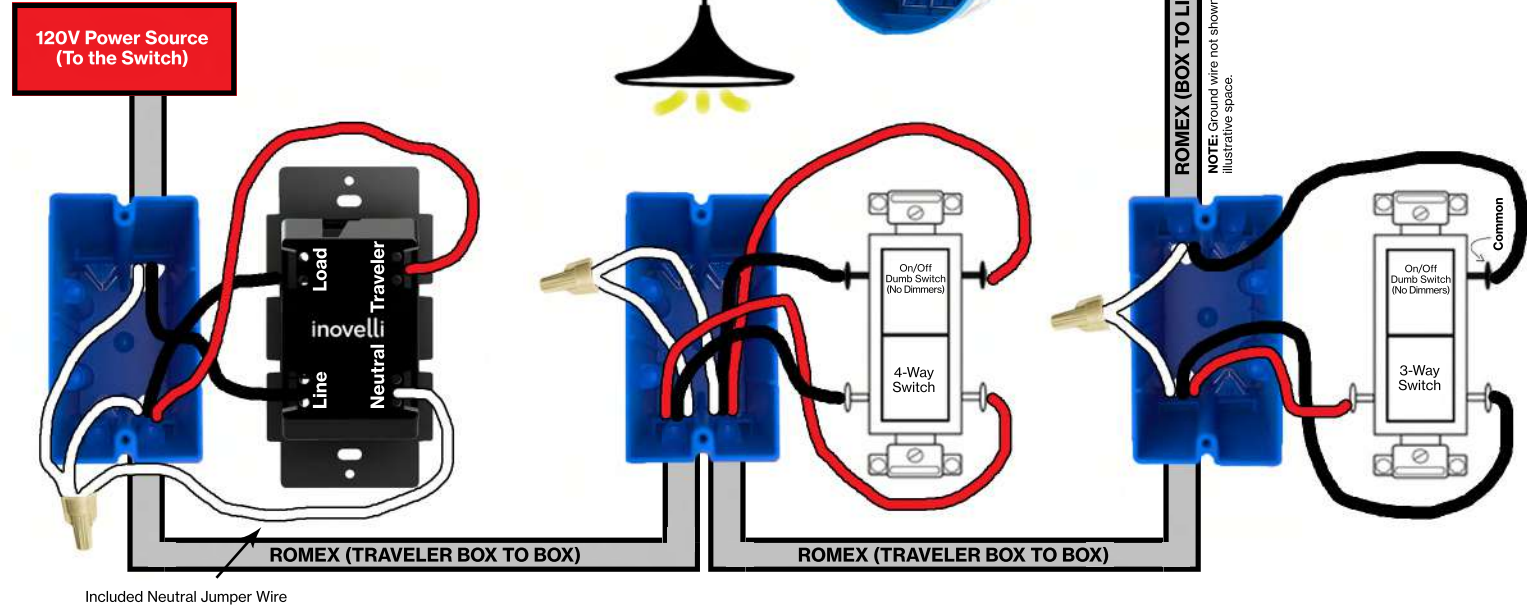
This part intentionally left blank.

4-WAY INSTALLATION (DUMB SWITCH)



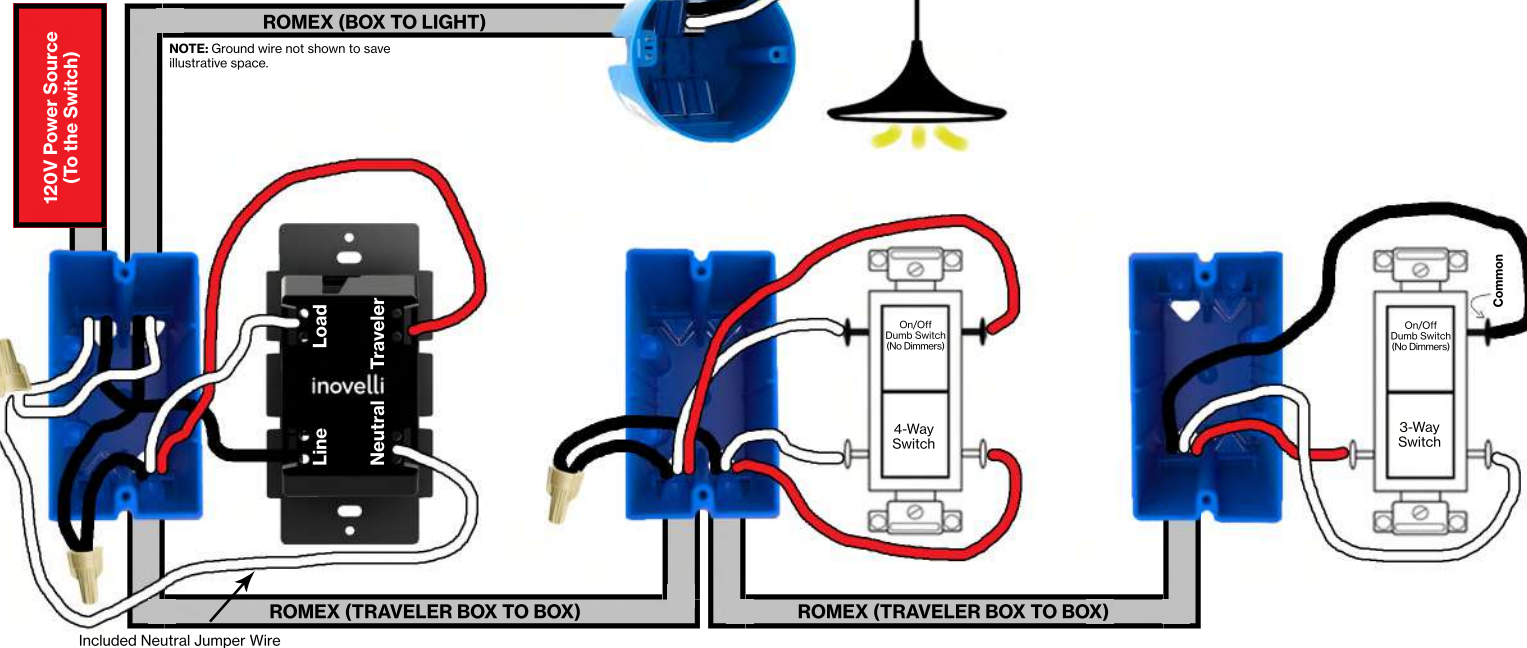
4-Way Installation (Line/Load Separate Boxes)

Inovelli Smart Switch + Existing Dumb Switches



4-Way Installation (Line/Load Same Box)

Inovelli Smart Switch + Existing Dumb Switches

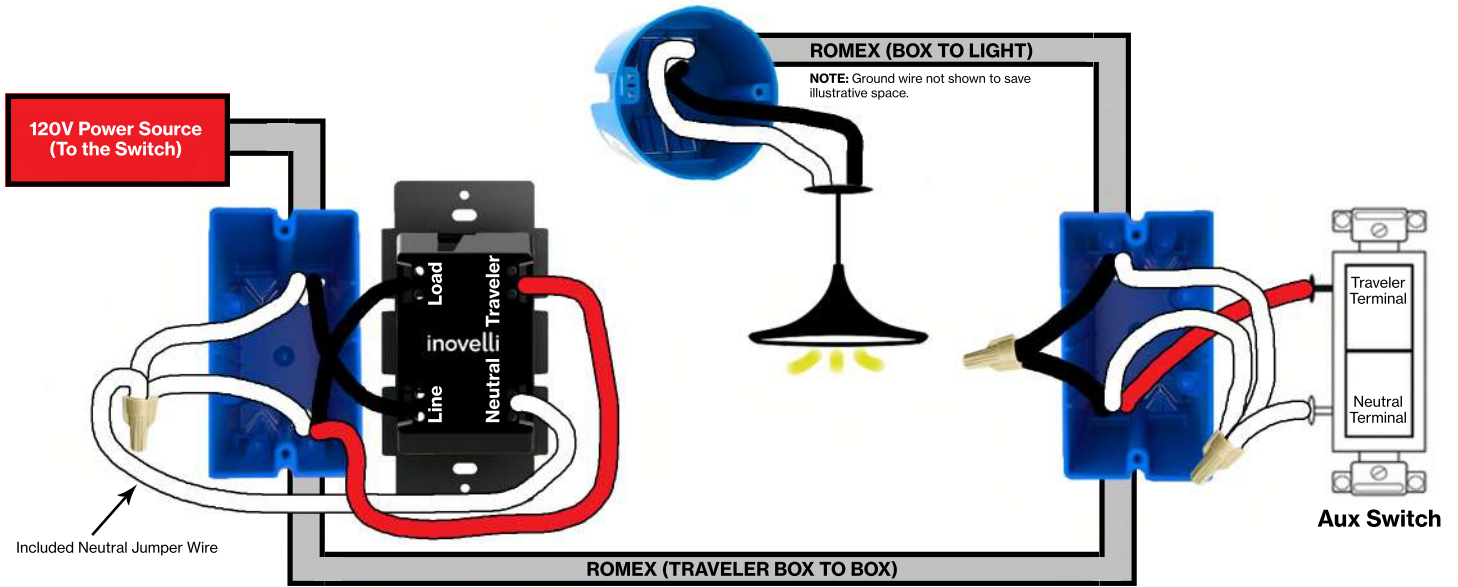


3-WAY INSTALLATION (AUX/ADD-ON SWITCH)



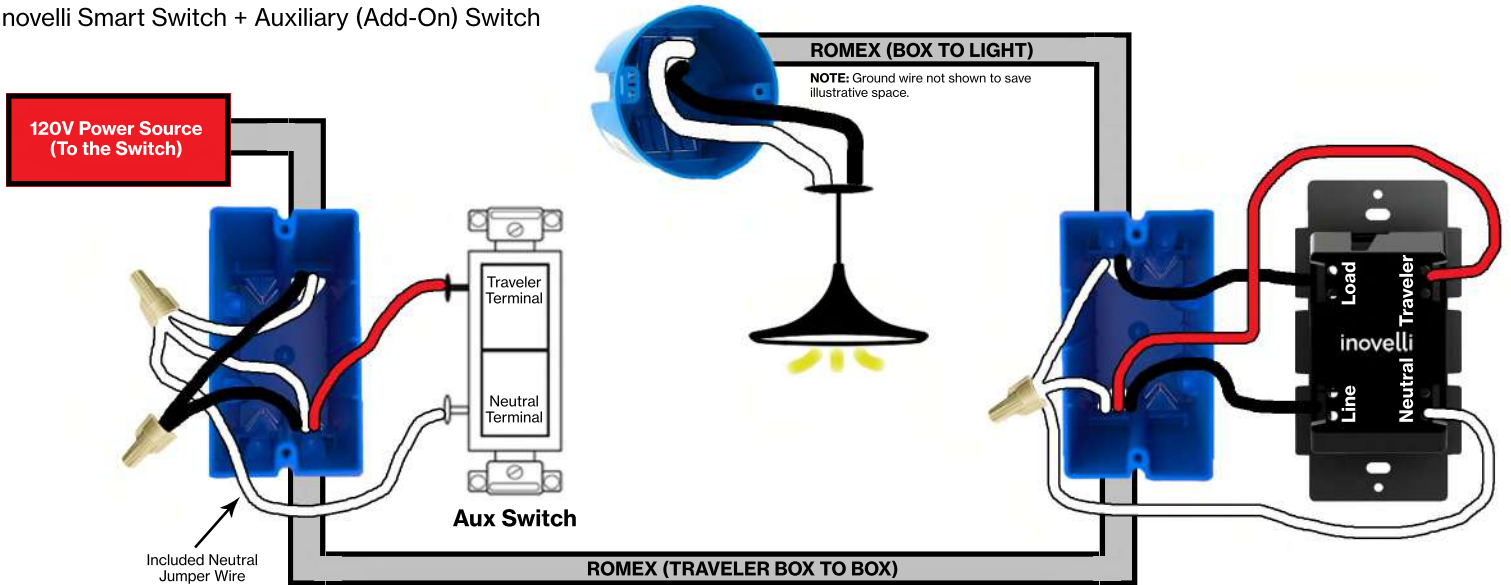
3-Way Installation (Line/Load Separate Boxes) - Option #1

Inovelli Smart Switch + Auxiliary (Add-On) Switch



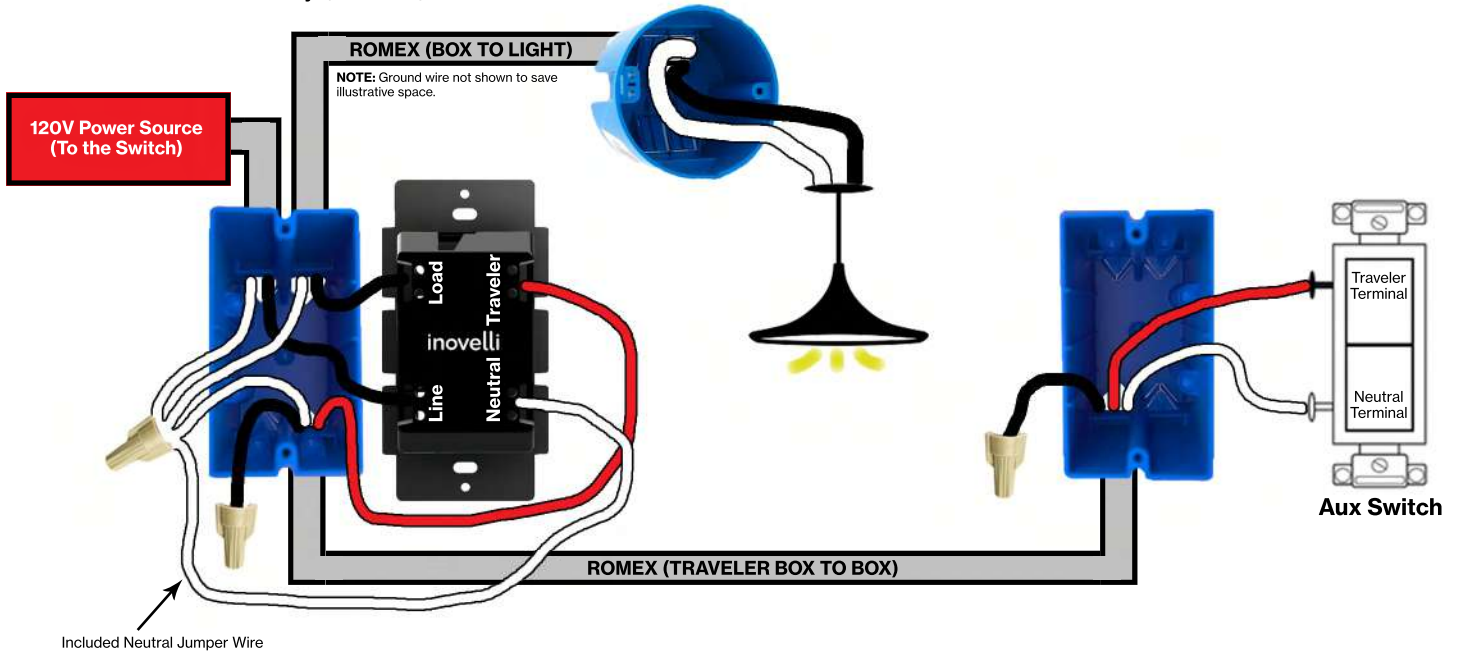
3-Way Installation (Line/Load Separate Boxes) - Option #2

Inovelli Smart Switch + Auxiliary (Add-On) Switch



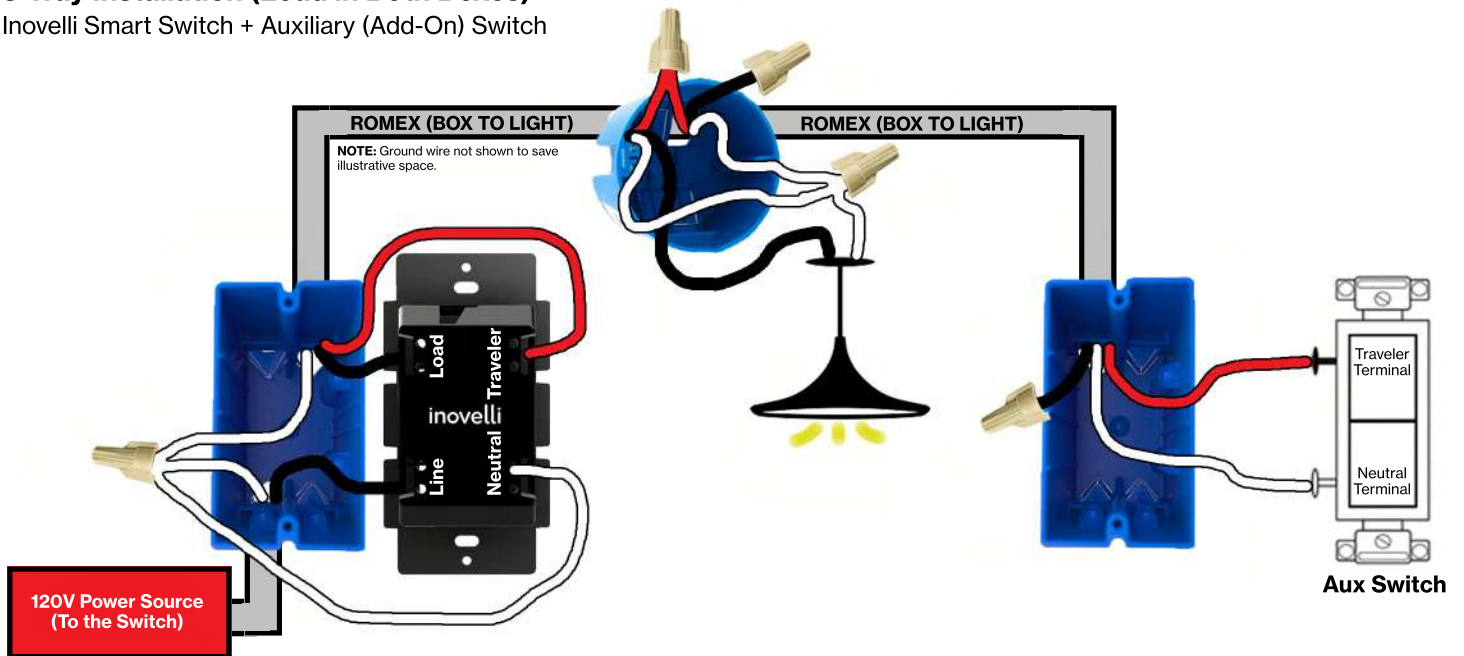
3-Way Installation (Line/Load Same Box)

Inovelli Smart Switch + Auxiliary (Add-On) Switch



3-Way Installation (Load in Both Boxes)

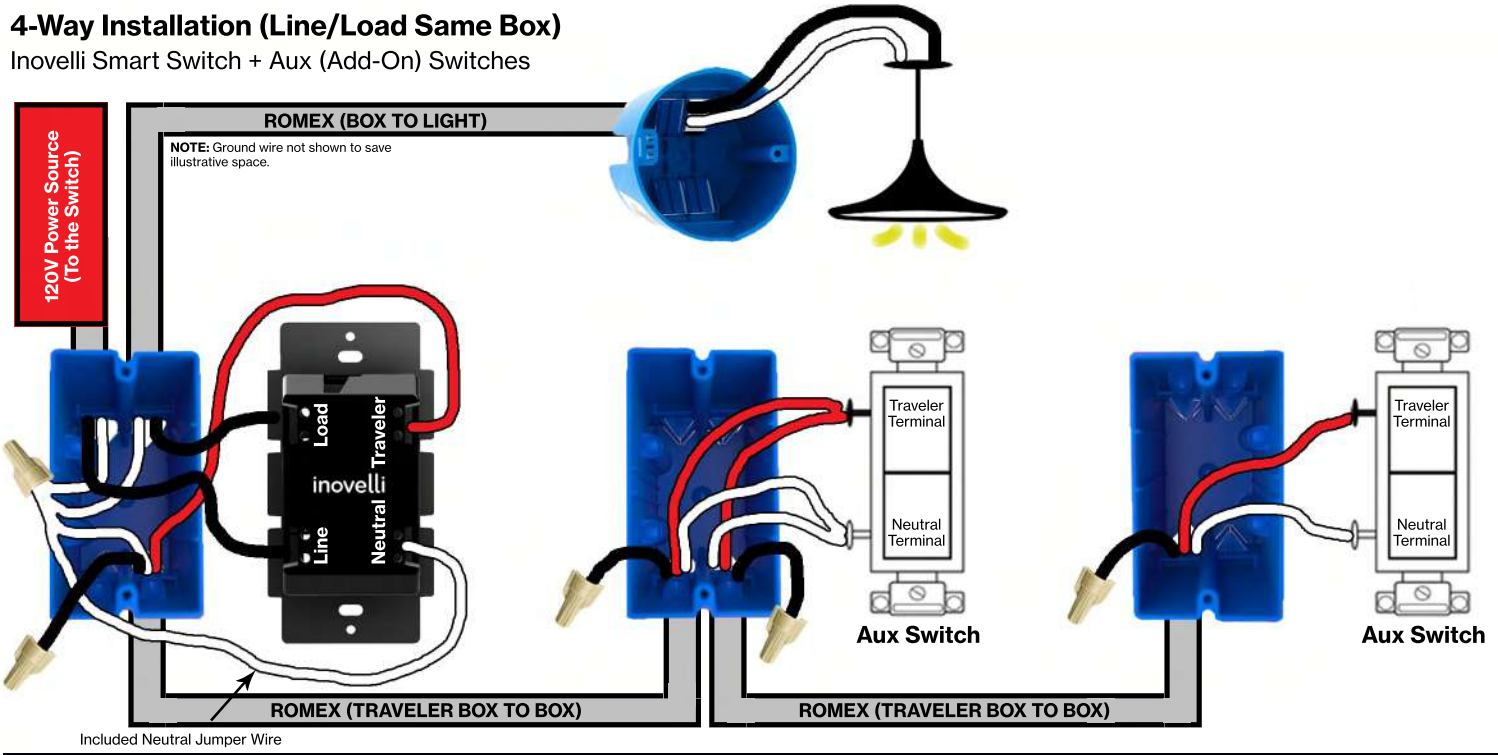
Inovelli Smart Switch + Auxiliary (Add-On) Switch



4-WAY INSTALLATION (AUX/ADD-ON SWITCH)

4-Way Installation (Line/Load Same Box)

Inovelli Smart Switch + Aux (Add-On) Switches



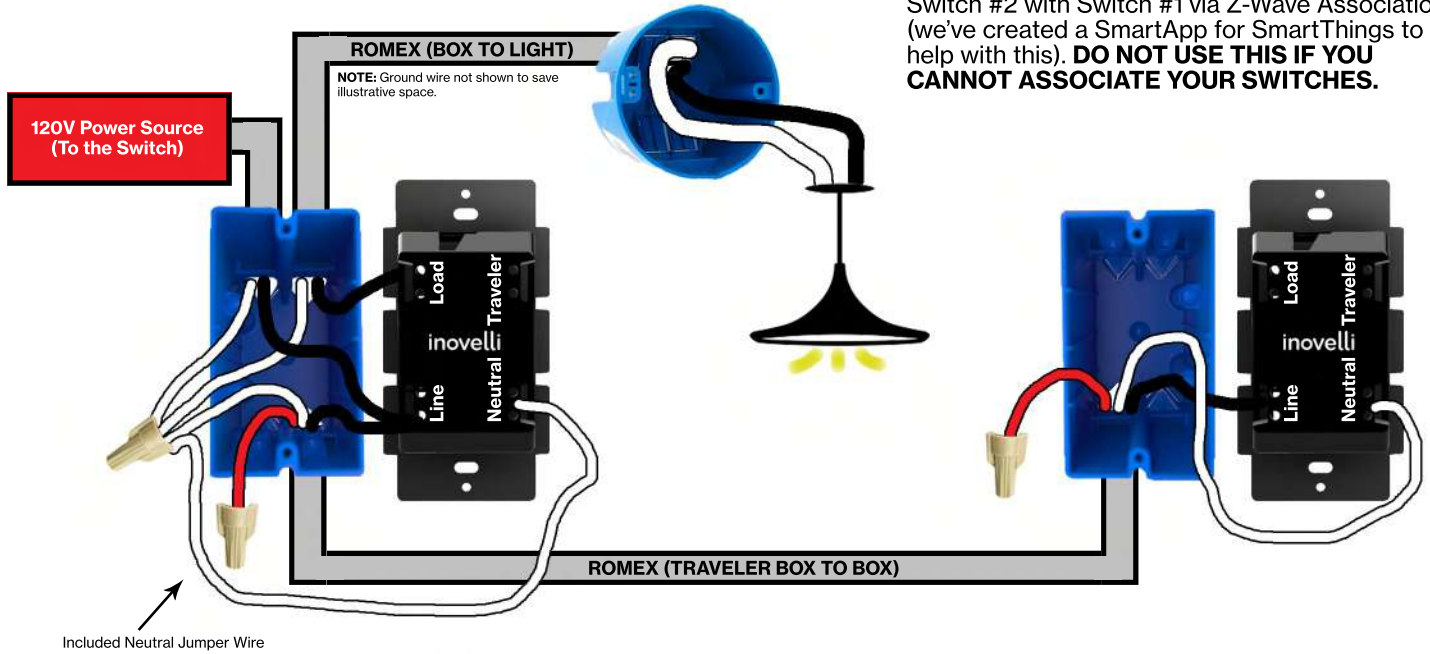
This part intentionally left blank.

3-WAY INSTALLATION (TWO SMART SWITCHES)



3-Way Installation (Line/Load Same Box)

Inovelli Smart Switch + Inovelli Smart Switch



This part intentionally left blank.